

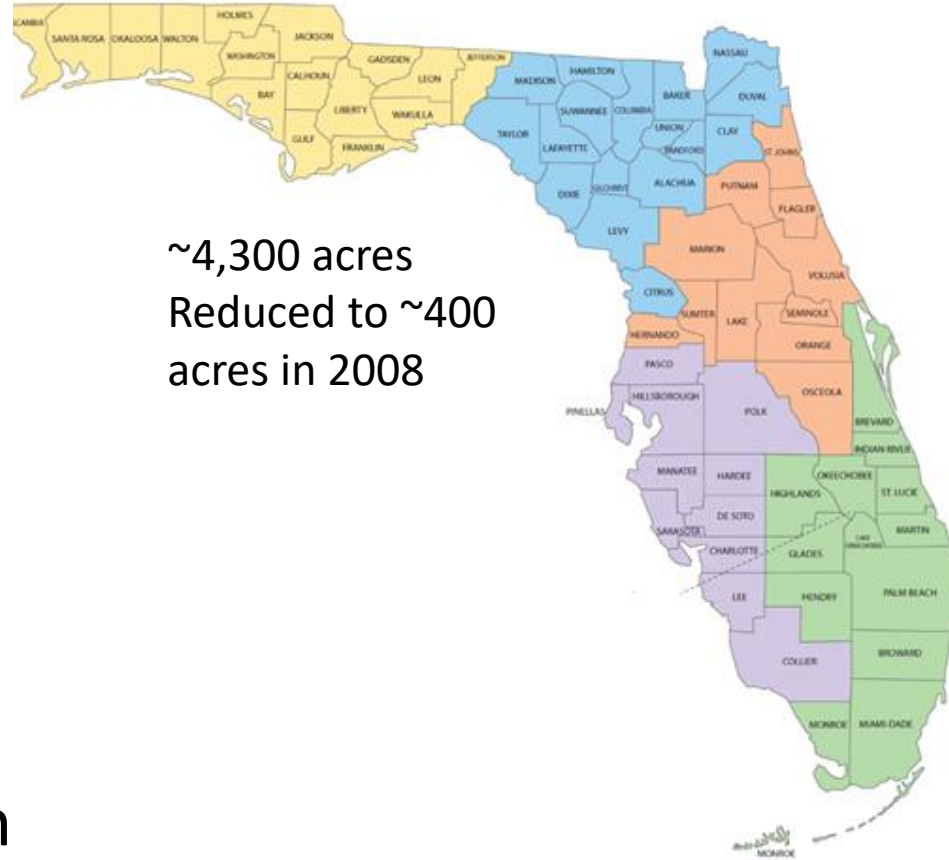
Stone Fruit Production in Florida: Successes and Challenges



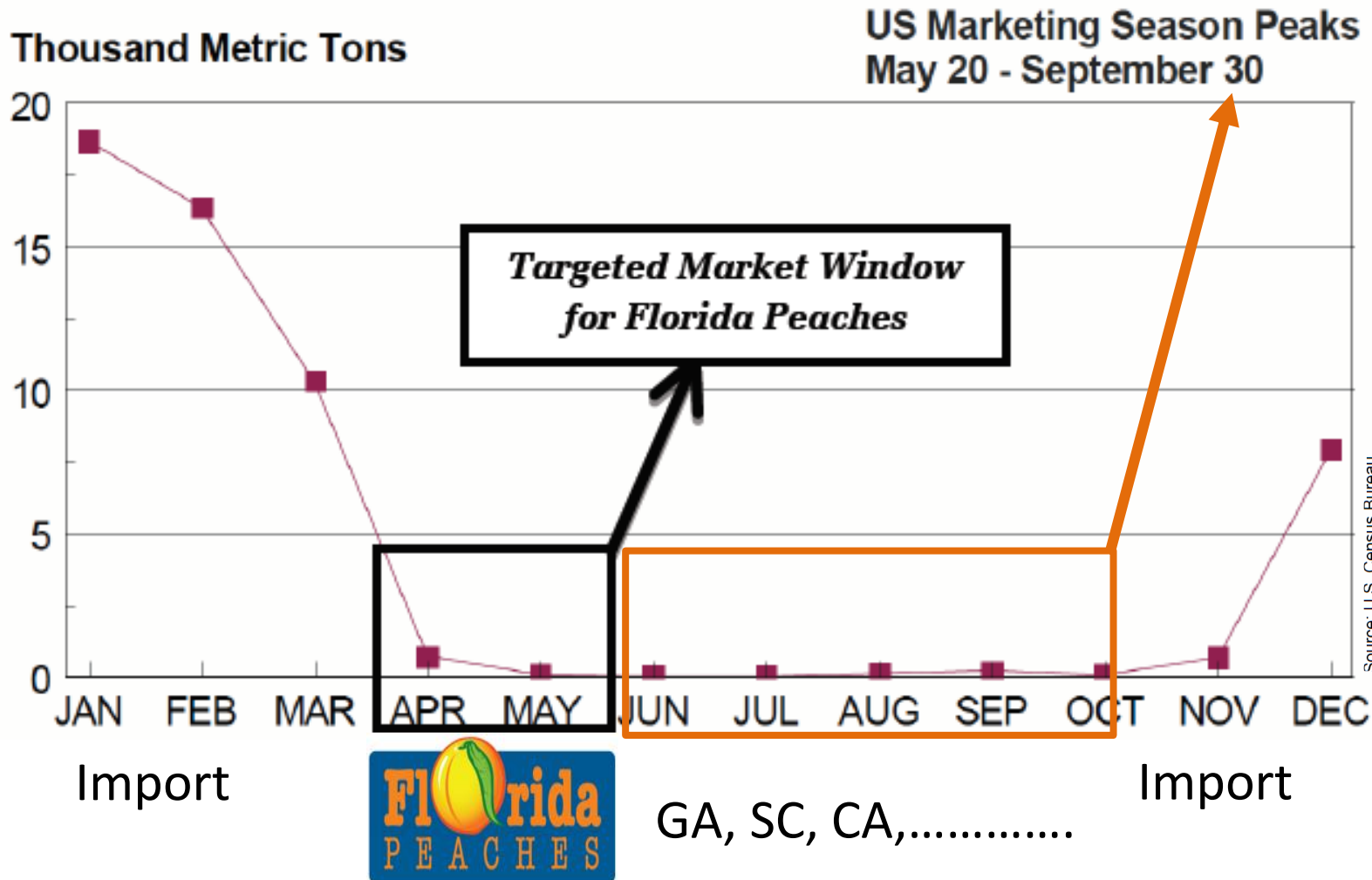
Ali Sarkhosh, Assistant Professor & Extension Specialist

Production History

- Peaked in the 1980s
- Medium-chill varieties
- Marketing challenges
- Domestic competition
- Lack of overhead irrigation

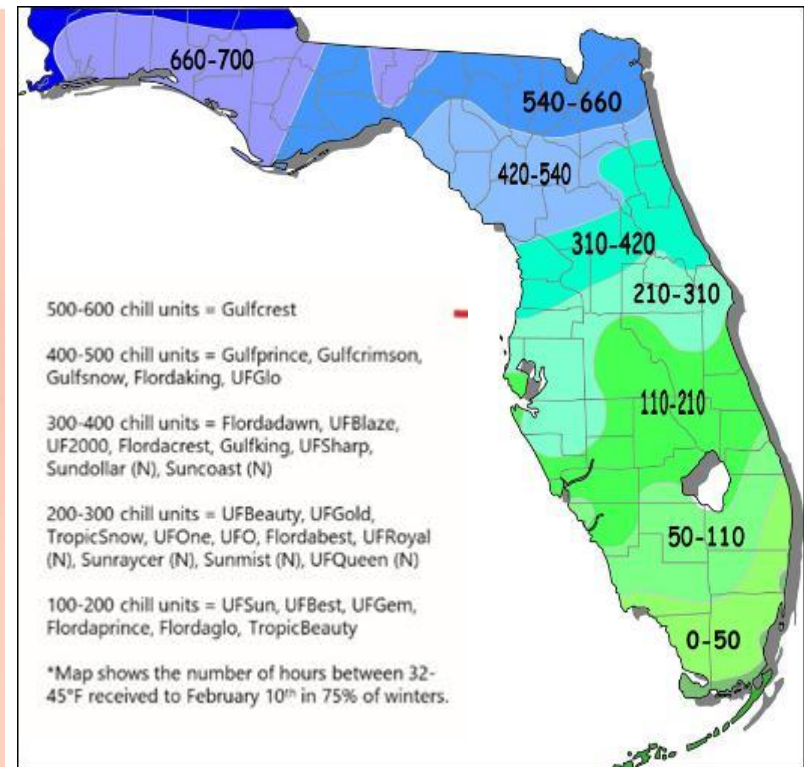
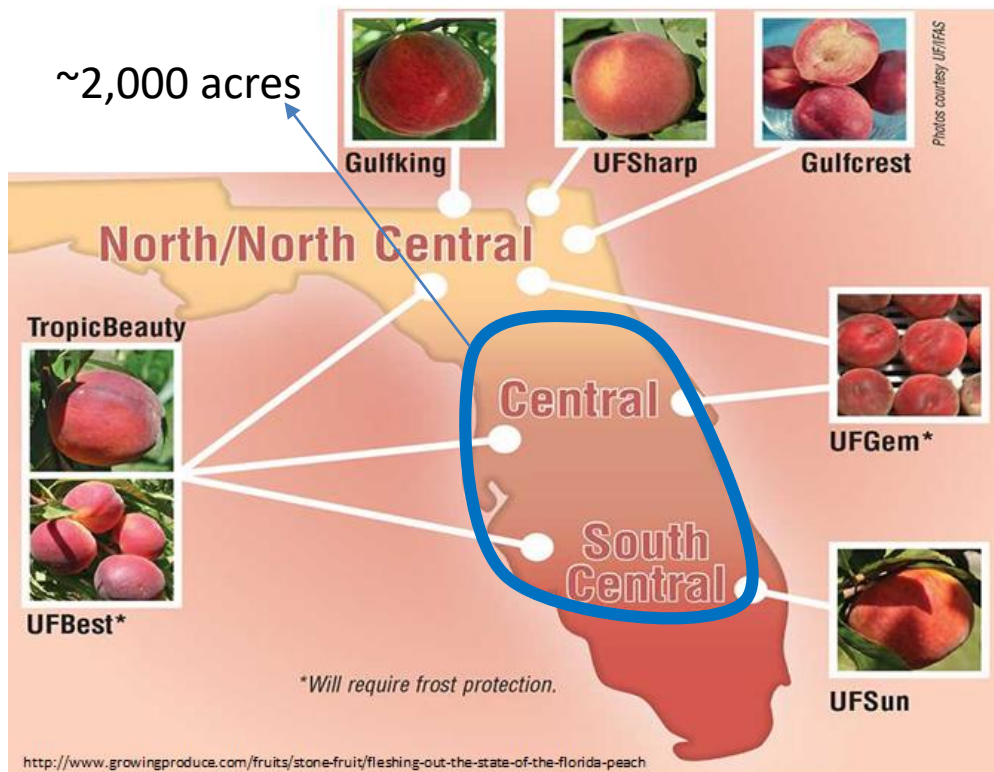


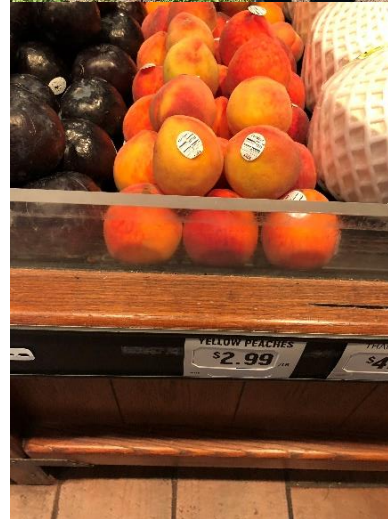
Production window for FL



UF stone fruit breeding program

<http://agroclimate.org/tools/chill-hours-calculator/>





Walmart

The Fresh Market

Whole Foods Market

Freeze protection



Fruit from Flordaguard/UF Sun 3/9/2018-Rootstock trial



Peach diseases



Fungal Gummosis



Peach Scab



Peach Leaf Rust



Brown rot

Peach Insects



Plum Curculio



Citrus root weevil



Stinkbugs



White Peach Scale



Caribbean fruit fly



San Jose Scale

Peach Tree Borers

Root-knot nematode

Meloidogyne floridensis

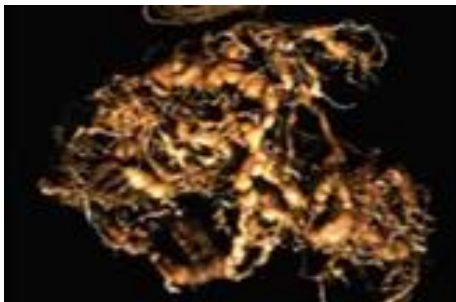


Tree on the right shows signs of nematode infestation such as yellowing, stunting and reduced vigor. Photo credit: Mary Ann D. Maquilan.



Reduction in foliage is resulting in the production of poor quality fruit.

Photo credit: Mary Ann D. Maquilan.



2018 Pest Management Guide

<http://hos.ufl.edu/extension/stonefruit>

https://secure.caes.uga.edu/extension/publications/files/pdf/B%201171_10.PDF

2018 SOUTHEASTERN PEACH, NECTARINE, AND PLUM PEST MANAGEMENT AND CULTURE GUIDE

Senior Editors: Brett Blaauw, Phil Brannen, Bob Bellinger, David Lockwood, and David Ritchie

Section Editors:

Disease Management – Phil Brannen, David Ritchie, and Guido Schnabel
Insect Management – Brett Blaauw and Donn Johnson
Weed Management – Wayne Mitchem and David Lockwood

Vertebrate Management – David Lockwood
Culture – David Lockwood, Dario Chavez, and Juan Carlos Melgar
Pesticide Stewardship and Safety – Milton Taylor

Contributors:

<p>Auburn University Wheeler Foshee Mike Patterson Ed Sikora</p> <p>Clemson University Bob Bellinger Juan Carlos Melgar Greg Reighard Guido Schnabel</p>	<p>University of Florida Pete Anderson Phil Harmon Russ Mizell</p>	<p>University of Georgia Brett Blaauw Phil Brannen Dario Chavez Keith Delaplane Jim Dutcher Harald Scherm Milton Taylor</p> <p>Louisiana State University Charlie Graham</p>	<p>Mississippi State University John Byrd</p> <p>North Carolina State University Wayne Mitchem Mike Parker David Ritchie Jim Walgenbach</p> <p>University of Tennessee Frank Hale David Lockwood</p>	<p>Texas A&M University Jim Kamas Monte Nesbitt Kevin Ong</p> <p>USDA-ARS, Byron, GA Tom Beckman Chunxian Chen Ted Cottrell Clive Bock</p>
--	--	--	--	--

TABLE OF CONTENTS

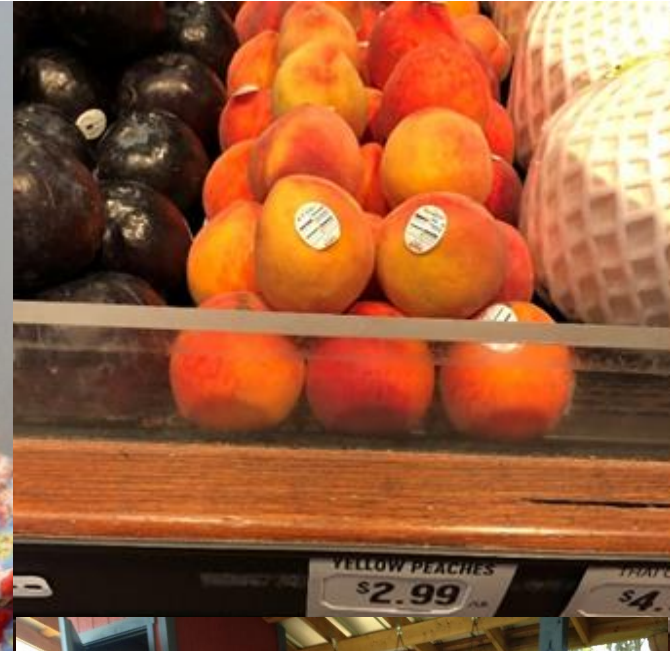
	PAGE	PAGE
2017 SOUTHEASTERN PEACH, NECTARINE AND PLUM MANAGEMENT GUIDE	2	
POISON CONTROL CENTERS	44	
EFFECTIVENESS OF DISEASE CONTROL MATERIALS	45	
PEACH INSECTICIDE AND MITICIDE CLASSES, HUMAN EXPOSURE RISKS, FINISH AND EFFICACY RATINGS	47	
WEED RESPONSE TO HERBICIDES USED IN FRUITS AND NUTS	49	
PESTICIDE SAFETY	51	
PEST MANAGEMENT STRATEGIES	52	
RESISTANCE MANAGEMENT	57	
ORCHARD WEED MANAGEMENT STRATEGIES	57	
HERBICIDE RECOMMENDATIONS	59	
NEMATODE CONTROL ON PEACHES		64
PEACH TREE SHORT LIFE MANAGEMENT		65
VERTEBRATE MANAGEMENT		65
EFFECT OF pH ON PESTICIDE ACTIVITY		70
EFFECT OF SPRAY WATER pH ON PEACH PESTICIDES		70
SPRAYER CALIBRATION		71
ALTERNATE ROW MIDDLE SPRAYING		72
PEST MANAGEMENT FOR NON-BEARING TREES		72
GIRDLING		72
ANNUAL FERTILIZATION OF BEARING TREES		73
NOTES		74

Fruit Size

Fruit diameter need to be over 2,5in for supermarkets



<https://www.westjetmagazine.com/blog/great-kids-snacks-pack-your-flight>



Deer Park Peaches Facebook
5/29/2018

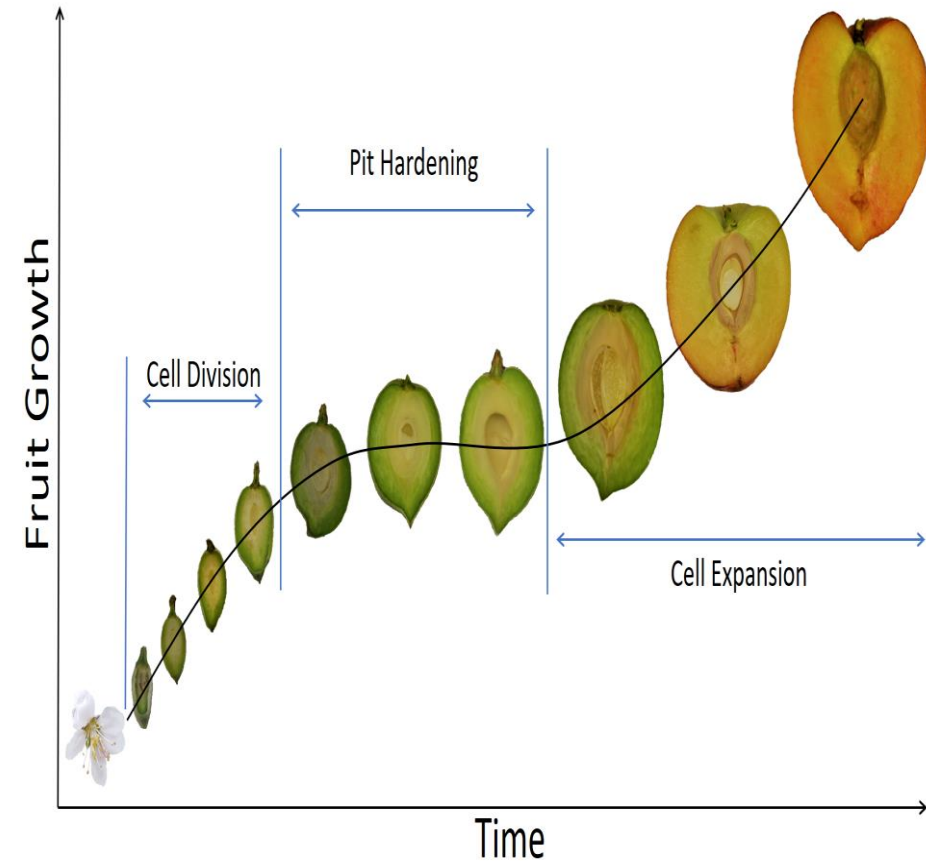
- Mini pack of smaller size fruit
- Kids-snacks-pack



Deer Park Peaches Facebook

Fruit Size

Fruit thinning before pit got harded is the key to increase the fruit size



Fruit growth stages in cv. UFSun



Thinned every ~8inches

Unthinned

2018 Fruit thinning experiment

Experiments to test the fermentability of juice from Florida peaches

-Local brewing

- Agritourism



Sensory, chemical, and visual characteristics of the fermented juice will be assessed.

Vegetative growth

- Producing high-quality fruit
- Pests management
- Improving spray coverage and penetration
- High density orchard
- Reducing production cost
- Simplify operational practices



Marketing

Grown in CALIFORNIA, USA
Yellow Peaches



Climate change

- Chilling unit
- Growing degree days
- Pest and disease development -and ...

1 chilling unit=1 hour @ 32°F-45°F

Insufficient chilling unit = delayed and prolonged budburst

Chilling unit based on temperature: 32-45 °F, <http://agroclimate.org/tools/chill-hours-calculator/>

County	Indian River	Polk	Hillsborough	Pasco	Orange	Lake	Marion	Alachua
This season	141	163	281	304	203	302	418	524
Last season	61	59	104	113	86	167	241	327
Historic average	211	233	288	267	282	420	417	625

Labor

Fruit-thinning and pruning, estimated cost of ~\$2,000/acre per year

-Growing system

-Agro-technical and agro-chemical techniques

-Diversification

-and....



A native Australian picker, able to reach high into the trees, good stamina, works well in hot climates, comes with in built picking bag



Florida Stone Fruit Association?

Fruit Crops Sustainability

Reducing production costs

Increasing yield

Improving fruit quality

New cultivars

Precision horticulture

New product and technics

Farm biosecurity

Canopy management

Resources for Growers

Stone Fruit at the University of Florida

<http://hos.ufl.edu/extension/stonefruit>

Operation Peaches in Florida

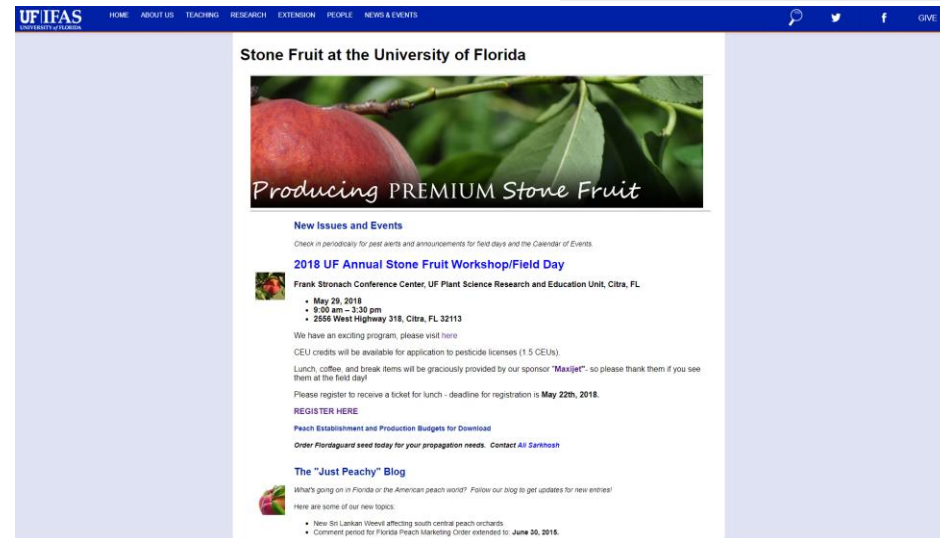
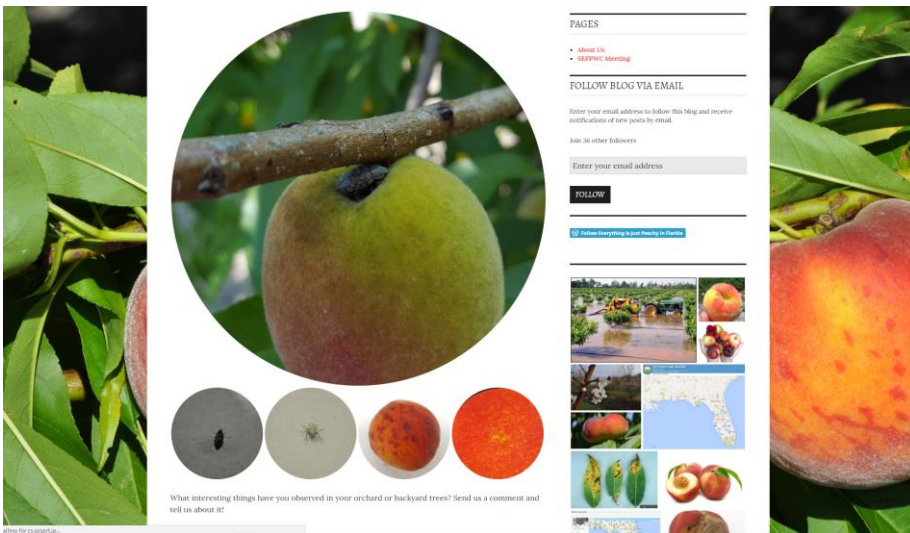
<https://ufstonefruit.wordpress.com/#jpc-carousel-464>

<https://www.facebook.com/stonefruitUFIFAS/>

facebook



Stone Fruit at the University of Florida
@stonefruitUFIFAS



Ali Sarkhosh Tel:352-273-4788 Email: sarkhosha@ufl.edu

UF/Stone Fruit Lab

Ali Sarkhosh, Principal Investigator
Dustin Huff, Program Coordinator

Yuru Chang, Graduate Student
Austyn Sanchez, Undergraduate student





Thank you,

“We would like to see growers get rewarded for the hard work that they have put into producing a quality product”